

## NEW RIVER L 24Vdc

IP68 IK08 CE III WP SUB 

TIPOLOGIA / TYPOLOGY

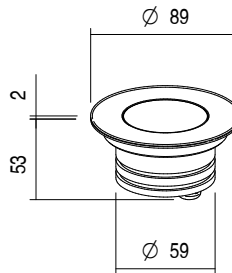
Incasso | Recessed

POSIZIONE INSTALLATIVA | INSTALLATION POSITION

A terra, a parete, a immersione | Floor, wall, by immersion mounting

AMBIENTE INSTALLATIVO | INSTALLATION LOCATION

Esterno | Outdoor



RIVER L

9,5W

 kg 1,12

# NEW RIVER L 24Vdc

## CARATTERISTICHE ELETTRICHE | ELECTRICAL FEATURES

|                                       |   |
|---------------------------------------|---|
| POTENZA ASSORBITA   POWER CONSUMPTION | 9,5W                                    |
| ALIMENTAZIONE   POWER SUPPLY          | 24Vdc                                   |
| ALIMENTATORE   POWER SUPPLY UNIT      | 24Vdc - 9,5W non incluso   not included |
| COLLEGAMENTO   CONNECTION             | Parallelo   Parallel                    |

## CARATTERISTICHE ILLUMINOTECNICHE | LIGHTING FEATURES

|   |   |
|---|---|
| COLORE LED   LED COLOUR                         | 2200K, 2700K, 3000K, 4000K, Red, Green, Blue  |
| INDICE RESA CROMATICA CRI   CRI                 | >80 (2200K, 2700K, 3000K, 4000K)              |
| BINNING   | 3 step MacAdam   3 MacAdam steps              |
| OTTICHE   OPTICS                                | 18°, 24°, 36°, Diffused, ASYM, 60°, 20° x 50° |
| FLUSSO REALE EMESSO - 3000K<br>REAL OUTPUT FLUX | 9,5W 738lm 36°                                |
| DURATA MEDIA LED   AVERAGE LED LIFE             | 50.000h L80 B10                               |


## CARATTERISTICHE MECCANICHE | MECHANICAL FEATURES

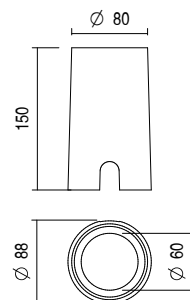
|                              |  |
|------------------------------|--|
| PESO   WEIGHT                | kg 1,12  |
| FINITURE   FINISHES          | Acciaio<br>Steel   |
| INSTALLAZIONE   INSTALLATION | A incasso a terra con cassaforma (non inclusa), a incasso su muratura con cassaforma (non inclusa), a incasso su piscina con telo con cassaforma, flangia e controgliera (non incluse), installazione fuori dall'acqua con cassaforma standard, installazione in immersione permanente con cassaforma IP68 o kit telo<br>Recessed on ground with housing box (not included), recessed on brickwork with housing box (not included), recessed on swimming pool with liner with housing box, flange and compensation trim (not included), installation out of water with standard housing box, permanent immersion installation with IP68 housing box or liner kit |
| MATERIALE   MATERIAL         | Corpo in acciaio inox AISI 316L, ghiera in acciaio inox AISI 316L, vetro temperato trasparente e lente in PMMA<br>AISI 316L stainless steel body, AISI 316L stainless steel trim, transparent tempered glass and PMMA lens   |



## CARATTERISTICHE GENERALI | GENERAL FEATURES

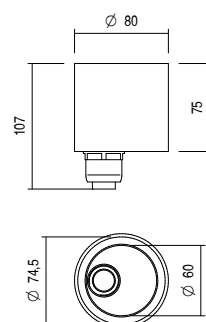
|   |                |
|---|----------------|
| TEMPERATURA DI ESERCIZIO<br>OPERATING TEMPERATURE | -10°C +45°C    |
| GRADO DI PROTEZIONE   INGRESS PROTECTION          | IP68           |
| GRADO DI RESISTENZA   IMPACT RESISTANCE           | IK08           |
| GLOW WIRE TEST   GLOW WIRE TEST                   | 960°C          |
| TEMPERATURA SCHERMO<br>SCREEN TEMPERATURE         | 40° @ Ta = 25° |
| CLASSE DI ISOLAMENTO   APPLIANCE CLASS            | III            |
| CALPESTABILE   WALKOVER                           | Sì / Yes       |
| CARRABILE   DRIVE OVER                            | 2000 Kg        |
| SICUREZZA STANDARD   STANDARD SAFETY              | WP System      |
| SICUREZZA FOTOBIOLOGICA<br>PHOTOBIOLOGICAL SAFETY | GR1            |

**NEW RIVER L 24Vdc**
**ACCESSORI | ACCESSORIES**

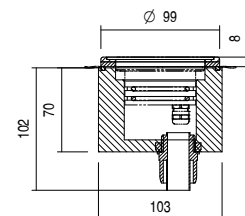
|                             |  |
|-----------------------------|--|
| <b>CODICE   CODE</b>        | <b>CAE60</b>   |
| <b>TIPOLOGIA   TYPOLOGY</b> | <b>Cassaforma</b><br>Housing box  kg 0,28 |
| <b>MATERIALE   MATERIAL</b> | <b>Polietilene</b><br>Polyethylene   |



|                             |  |
|-----------------------------|--|
| <b>CODICE   CODE</b>        | <b>CA860</b>   |
| <b>TIPOLOGIA   TYPOLOGY</b> | <b>Cassaforma IP68</b><br>IP68 Housing box   kg 0,10 |
| <b>MATERIALE   MATERIAL</b> | <b>PVC</b>   |



|                             |   |
|-----------------------------|---|
| <b>CODICE   CODE</b>        | <b>KT860</b>  |
| <b>TIPOLOGIA   TYPOLOGY</b> | <b>Kit Telo</b><br>Liner Kit   kg 0,5 |
| <b>MATERIALE   MATERIAL</b> | <b>Acciaio inox,</b><br>alluminio e PVC<br>Stainless steel, aluminium and PVC   |


**FILTRI | FILTER**

a scelta | to be chosen

|                             |   |
|-----------------------------|---|
| <b>CODICE   CODE</b>        | <b>BC</b>   |
| <b>TIPOLOGIA   TYPOLOGY</b> | <b>Filtro Black &amp; Clear</b><br>Black & Clear filter       |
| <b>NOTE</b>                 | with 18°, 24°, 36°, 60° lens only                             |
| <b>CODICE   CODE</b>        | <b>BD</b>   |
| <b>TIPOLOGIA   TYPOLOGY</b> | <b>Filtro Black &amp; Diffused</b><br>Black & Diffused filter |
| <b>NOTE</b>                 | with diffused lens only                                       |

